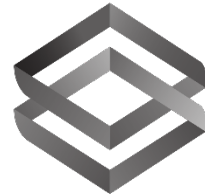




ProAV CMS

Central Management System



User Guide



Contents

1. Introduction.....	3
1.1 Purpose.....	3
1.2 OS and environment requirement.....	3
1.3 Supported EZCast ProAV Devices.....	3
1.4 Preparation and CMS App Installation.....	4
1.4.1 Installation	4
2. Main Functions.....	8
2.1 Device Management	8
3. Dashboard	9
3.1 CMS main page.....	9
3.1.1 Device status	9
3.1.2 Device Selection.....	10
3.1.3 CMS Tool Setting	10
3.2 Maintenance.....	10
3.2.1 Device firmware upgrade	11
4 Details and Instructions.....	12
4.1 Device.....	12
4.1.1 Firmware upgrade.....	12



1. Introduction

Thank you for choosing EZCast ProAV Control Management System, the unique remote management tool equipment powered by EZCast Pro.

CMS can support the management of multiple EZCast ProAV devices and designed to fulfill certain functions. For instance, mass deployment, configuration, and status overview. The upcoming functions would be updated via OTA.

1.1 Purpose

Manage a great amount of EZCast ProAV products for firmware upgrading, system status monitoring, main parameters setting, etc.

1.2 OS and environment requirement

Windows and MacOS are supported with both internet and intranet environment.

- ✓ Windows 7/8/10
- ✓ macOS 10.12 or higher

1.3 Supported EZCast ProAV Devices

- ✓ EZCast ProAV Ethernet Transmitter and Receiver with firmware version **1.12535.2** or higher version. **Please make sure all the transmitters, receivers are connecting to the network switch via Ethernet cable.**
- ✓ EZCast ProAV Wireless Transmitter and Receiver with firmware version **1.12525.2** or higher version. **Please make sure all the transmitters, receivers are connecting to the network switch via Ethernet cable.**

*Note: To be discovered by CMS tool, devices above should be upgraded to the firmware version supporting CMS tool.

1.4 Preparation and CMS App Installation

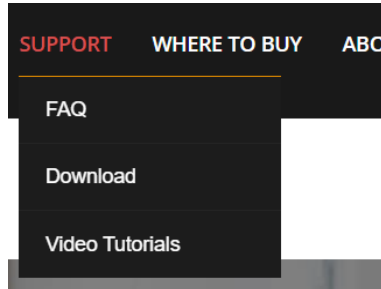
1.4.1 Installation

Downloading CMS

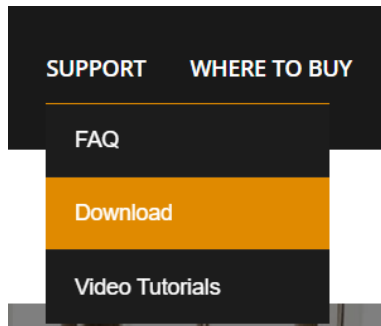
- 1) Go to <https://ezcast-pro.com/>



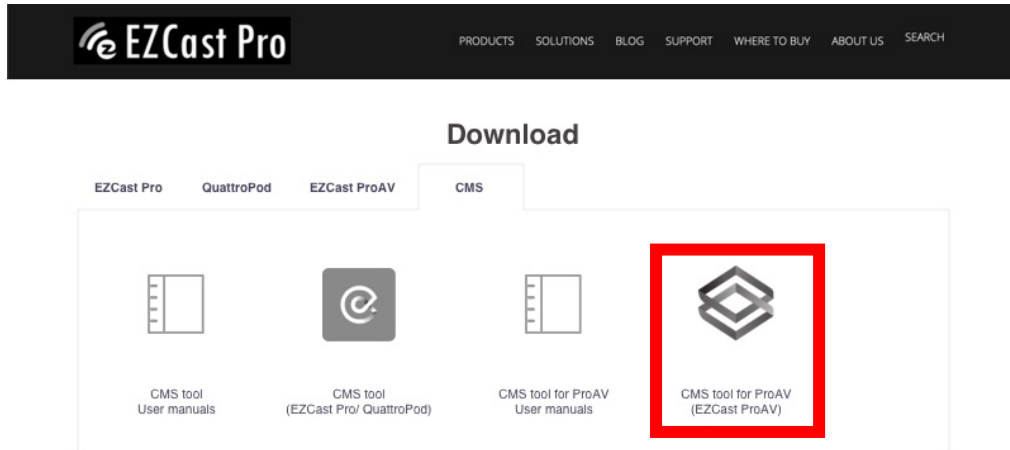
- 2) Click on Support



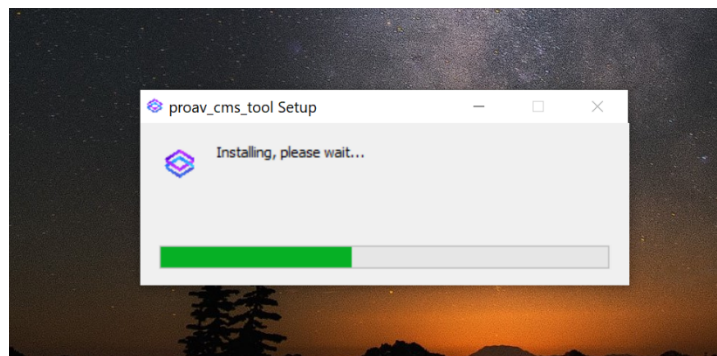
- 3) Click on Download



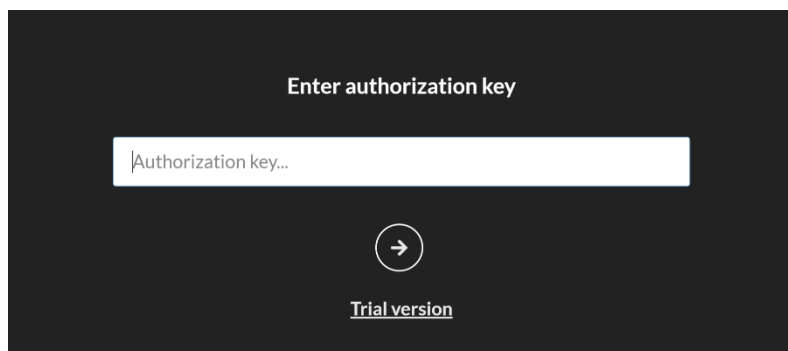
- 4) Click on CMS tool for ProAV
Download CMS App for Windows or macOS.



- 5) Install the CMS tool for EZCast ProAV

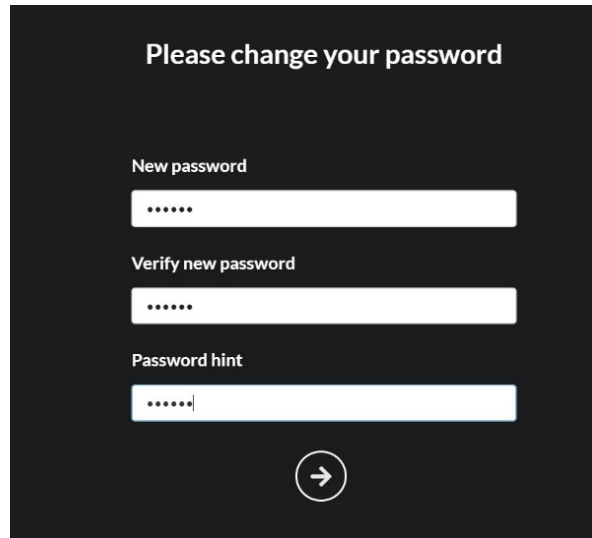


- 6) Enter authorization key
Please note that an authorization key is optional. The trial version could support up to 8 units of EZCast ProAV devices at the mome





7) Set the password



Please change your password

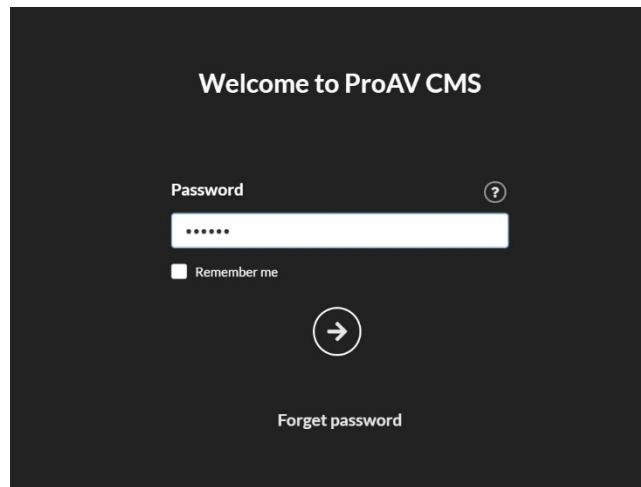
New password
.....

Verify new password
.....

Password hint
.....|

→

8) Log in as admin user



Welcome to ProAV CMS

Password ?
.....

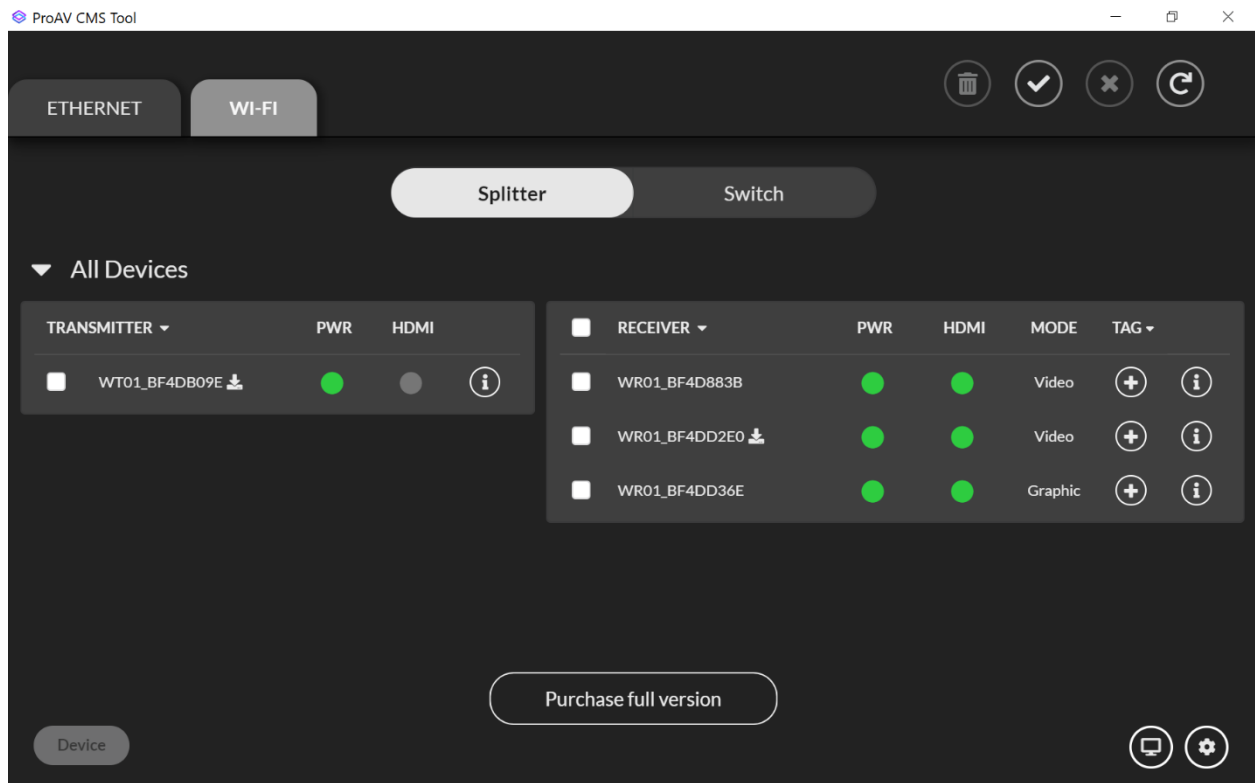
Remember me

→

[Forget password](#)



9) The overview of EZCast ProAV within the company





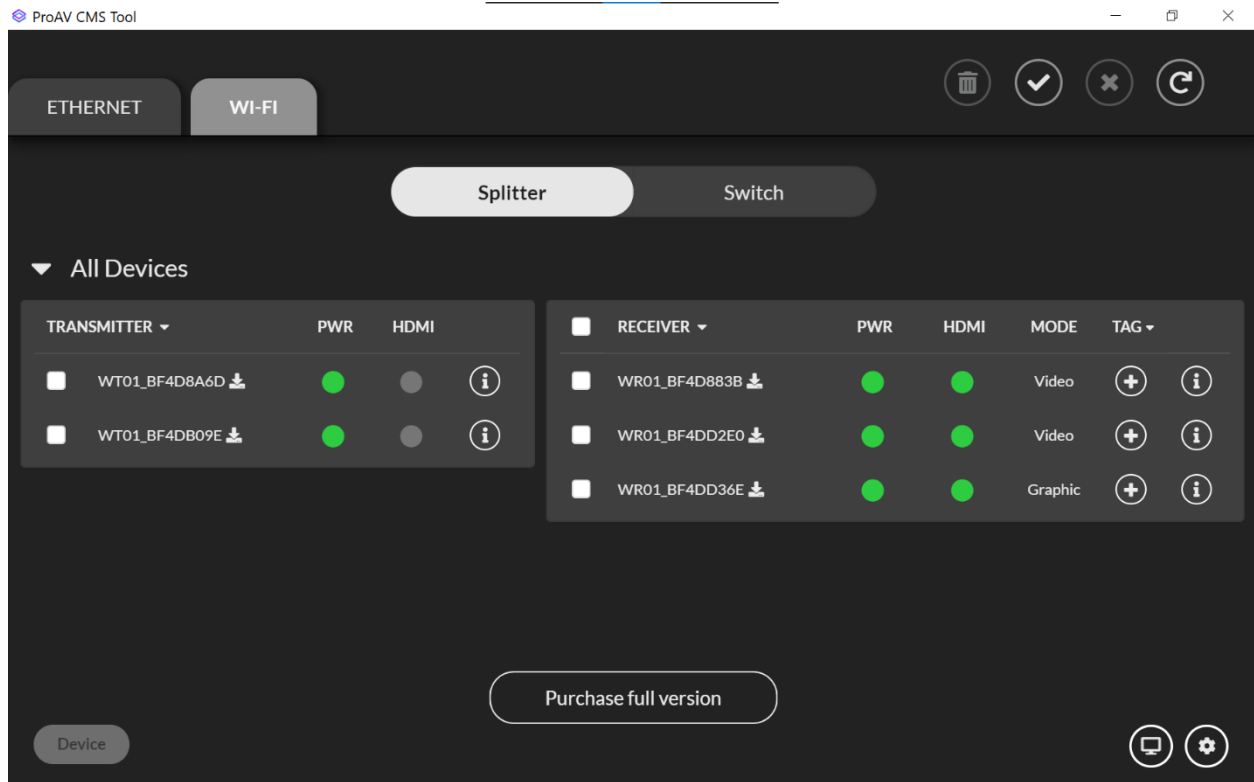
2. Main Functions

2.1 Device Management

For large scale management CMS can be used as a management hub. Handle your devices and accelerate deployment more effectively. The CMS will help to build a more consistent infrastructure within the organization.

3. Dashboard

3.1 CMS main page



3.1.1 Device status

List all products in same network which can be discovered

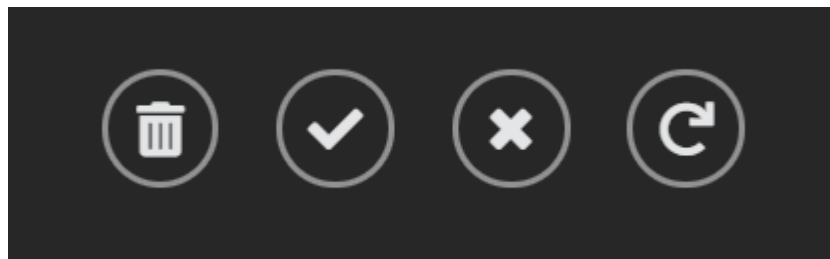
RECEIVER	PWR	HDMI	MODE	TAG
WR01_BF4D883B	●	●	Video	+ i
WR01_BF4DD2E0	●	●	Video	+ i
WR01_BF4DD36E	●	●	Graphic	+ i

- Transmitter/Receiver: Listing the product type and the name for each EZCast ProAV device
- PWR: The power status of EZCast ProAV device
 - Green: Online

- Red: Offline
- HDMI: Indicating if the EZCast ProAV transmitter/receiver is connecting with a HDMI input/output
 - Green: EZCast ProAV transmitter/receiver is connecting with HDMI input/output
 - Red: EZCast ProAV transmitter/receiver is not connecting with HDMI input/output
- Tag: Add a remark on certain EZCast ProAV device
- Device Info: Showing the device information, including device name, IP address, MAC address, Firmware version

3.1.2 Device Selection

Select EZCast ProAV devices and setup configuration.



- Remove: Removing devices from the dashboard
- Select All: Selecting all devices from the dashboard
- Deselect: Deselect all devices from the dashboard
- Refresh: Rediscovery if there's new EZCast Pro device within the network

3.1.3 CMS Tool Setting



Show related information about EZCast ProAV CMS tool.

- CMS Tool Setting
 - Change Password: Change admin password for CMS tool
 - Enter authorization key: Upgrade to the official version. The number of managed devices could be more than 8
 - About: The current version of CMS tool

3.2 Maintenance

It has several functions, the remote part is mostly for IT maintenance routine.



3.2.1 Device firmware upgrade

The CMS will check the OTA or file server for the newer firmware version for this device.

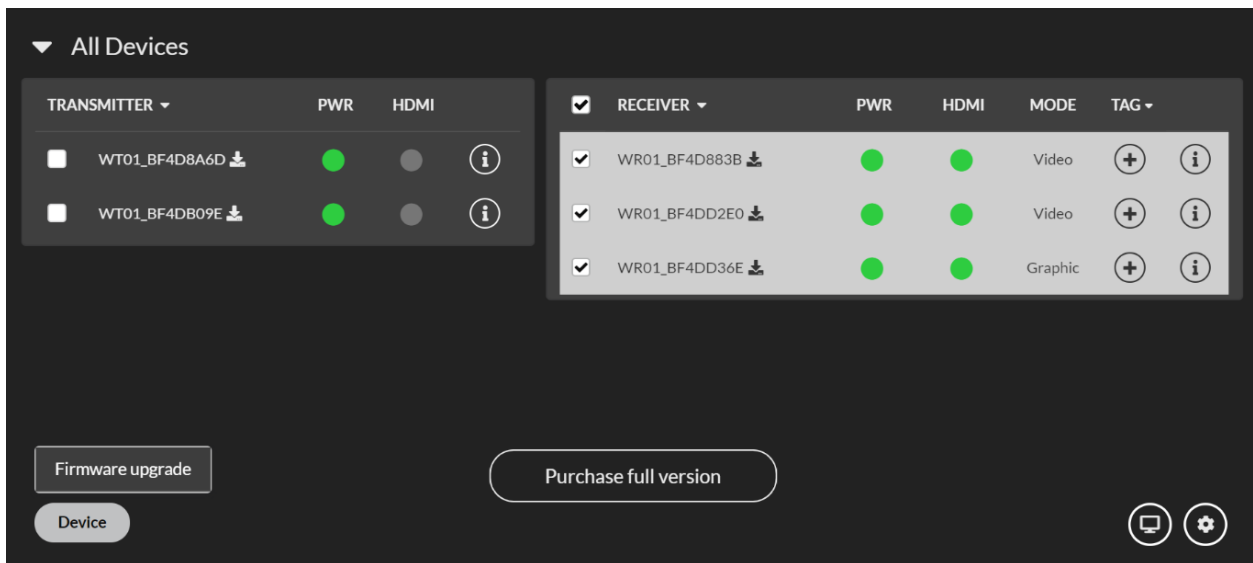
4 Details and Instructions

4.1 Device



Configure and deploy a large scale of devices remotely.




4.1.1 Firmware upgrade

Upgrade EZCast ProAV device in batch. At the moment, the EZCast ProAV CMS tool could allow user to update via OTA or with local firmware file.



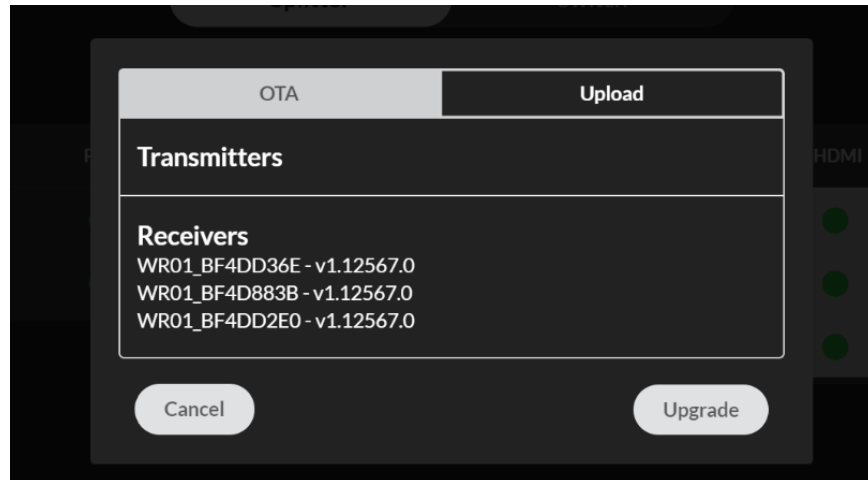
The screenshot displays the 'All Devices' management interface. It is divided into two main sections: 'TRANSMITTER' and 'RECEIVER'. The 'TRANSMITTER' section lists two devices with their respective power (PWR) and HDMI status indicators. The 'RECEIVER' section lists three devices, each with a checked selection box, power (PWR) and HDMI status indicators, a mode (Video or Graphic), and a tag dropdown menu. At the bottom, there are buttons for 'Firmware upgrade', 'Purchase full version', and 'Device', along with a settings icon.

TRANSMITTER	PWR	HDMI
<input type="checkbox"/> WT01_BF4D8A6D 	●	●
<input type="checkbox"/> WT01_BF4DB09E 	●	●

<input checked="" type="checkbox"/> RECEIVER	PWR	HDMI	MODE	TAG
<input checked="" type="checkbox"/> WR01_BF4D883B 	●	●	Video	<input type="button" value="+"/> <input type="button" value="i"/>
<input checked="" type="checkbox"/> WR01_BF4DD2E0 	●	●	Video	<input type="button" value="+"/> <input type="button" value="i"/>
<input checked="" type="checkbox"/> WR01_BF4DD36E 	●	●	Graphic	<input type="button" value="+"/> <input type="button" value="i"/>



OTA: OTA means “Over the air” it means that the user can update from the internet the firmware version. It will auto check the firmware version and upgrade with internet connection.



Upload: This is to upload from the local file. And simply select the device you wish to upload and click “File”. (This function is basically designed for the users like distributors or resellers.)

